



Vertical Displays

Time Tech DIGITAL SIGNAGE DISPLAYS

Complete digital in-store promotion solution

STREAMLINES your sales efforts.

GRABS your customer's attention

INFLUENCE their decision

Highlight New Products and Services

Promote Special Offers

Increase Customer Satisfaction

Entertain with videos, tips and slide shows

GRABS your customer's attention

INFLUENCE their habits

Monitor, Manager and Schedule the Content

Add, Change and Remove Content

Update the Content Using: **Your Computer**

**From Anywhere
at Anytime**



High definition
videos & images



Scheduling



RSS Feeds



Centralized real
time updates



Integration
services tools



Vertical Displays



Displays Features

- Available in different sizes 42" - 46" Diagonal Size
- Full HD 1080 X 1920 Wide Scree
- Aspect Ratio 16:9
- Long Life high brightness LED Screen
- Metal Frame + Toughened glass
- Black and silver color
- 178o view angle
- Full body Dimensions 186 X 723 X 90 cm
- Designed for 24/7 operation
- Built-in Android O.S.
- Built-in Memory and RAM
- Built-in WiFi module
- Built-in Speakers
- USB, SSD memory, Ethernet ports
- Remote Control
- optional Touch Screen
- Built in Players for stand-alone solutions to play (Video, Pictures, Songs, Presentations Etc.)
- Compatible with Remote Management Server Application for centralized management solutions





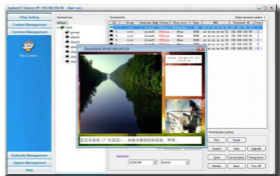
Vertical Displays

Time Tech DIGITAL SIGNAGE DISPLAYS

Centralized Server

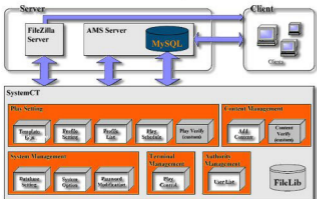
Thousands of player terminals and streaming media file servers via Intranet / Internet As a centralized system management server, includes the following functions:

- Editing management
- Document management
- Play management
- Terminal management
- Play log management
- Remote monitoring
- User rights management
- And many other administrative management.



Content management can be done for single display or group of displays.

Management software is simple, easy to use, runs on windows platform, compatible with an ordinary office computers, as long as the management computers are network-enabled that can managed through permissions set to meet more than one management terminal to take control of the entire system in a different regions.





**Time
Tech** DIGITAL
SIGNAGE
DISPLAYS

Vertical Displays

Applicable Fields

Business Organizations

Kiosk display widely used in supermarket, shopping malls, exclusive agency, chain shops, large-scale sales, hotels, restaurants, travel agencies, etc.

Financial Organizations

Banks, negotiable securities, funds, insurance companies, pawnshops, etc.

Non-profit Organizations

Vertical Displays widely used in telecommunications, post offices, hospital, schools, etc.

Public Places

Stand display used in subway, airports, stations, gas stations, toll stations, bookstores, parks, exhibition halls, stadiums, museums, convention centers, ticket agencies, etc.

Real Estate Property

Apartments, offices, commercial buildings, model rooms, property brokers, etc.

Entertainments

Can be used in Movie theaters, fitness halls, clubs, massage rooms, bars, cafes, Internet bars, beauty shops, golf course, etc.

And defiantly will help to improve your business also