



# E-poster

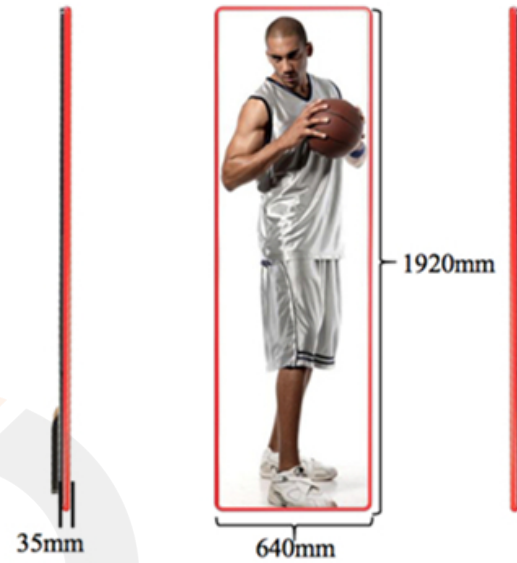
-indoor, 640x1920mm

P1.86/2.0/2.5/3.076



## Ultra thin & Light

LED poster intelligent screen thickness 35mm, net weight 24kg, high-end ultra-thin, light and flexible, easy to install and move.



Folding brachet

Base (vertical base, inclined base)



Easy to maintain



Low power consumption



Intelligent management



Support ceiling mount



HD display



Lightweight cabinet



\*Ultra-light and ultra-thin

\*Plug and play

\*Super bright, clear image picture

\*Good color reproduction ability

\*Intelligent control: 4G/3G WIFI USB LAN, remote control

\*Module maintenance

\*High Reliability

\*Various installation methods

DIGITAL  
DATA  
DIMENSIONS

# Control System



## Smart Cloud Management

Poster LED Display supports both synchronous & asynchronous control system, and the contents can be updated via iPad, Phone or Notebook. Real-time play, cross-platform information delivering, USB or WIFI supporting and IOS or Android multi-devices. Besides, it can support the built-in media player to store and play videos and images in all formats.



## Multi-Screen Splicing

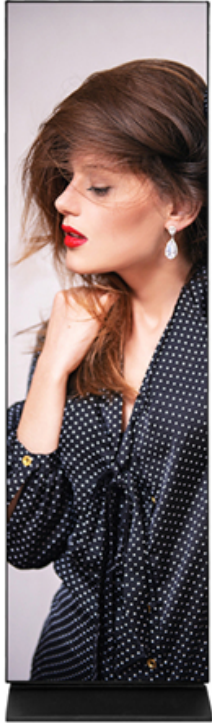
The Digital LED poster display not only supports individual usage but also cascade program. Multiple Screens can be spliced together into a large LED display screen. 2-6 units poster led displays can be perfectly spliced together. You can show same images on each poster led display or show a complete image on all poster led displays.



DIGITAL  
DATA  
DIMENSIONS



# Multi-installation



Standing



Floor-standing



Wall mounted



Lifting

DIGITAL  
DATA  
DIMENSIONS

# Poster LED Screen

**Gorgeous color, transmit your commodity verve!**

LED poster intelligent screen, fashion and simple design, light and simple structure, rich gorgeous picture, spread the charm of goods, give the space high-end atmosphere.



## Parameters

Model Name	E-poster1.86	E-poster2.0	E-poster2.5	OE-poster 3.076
Pixel Pitch	1.86mm	2.0mm	2.5mm	3.076mm
Pixel Density/m <sup>2</sup>	289,000 dots	250,000 dots	160,000 dots	105,690 dots
LED Configuration	SMD1515	SMD1515	SMD1515	SMD2020
Module Size	320mm * 160mm	320mm * 160mm	320mm * 160mm	320mm* 160mm
Module Resolution	172* 86 dots	160* 80 dots	128 * 64 dots	104 * 52 dots
Panel Dimension	640*1920*35mm	640*1920*35mm	640*1920*35mm	640*1920*35mm
Panel Resolution	344* 1032dots	320* 960 dots	256* 768 dots	208* 624 dots
Panel Weight	45 Kg	45 Kg	45 Kg	45 Kg
Driving Mode	1/43	1/40	1/32	1/26
Refresh Rate	3840Hz	3840Hz	3840Hz	3840Hz
Brightness	≥ 800 cd/m <sup>2</sup>	≥ 800 cd/m <sup>2</sup>	≥ 800 cd/m <sup>2</sup>	≥ 1000 cd/m <sup>2</sup>
Color processing bits	14-16bit			
Cabinet raw material	Aluminum			
IP Rating	IP3X			
Applicable standards	CCC, TUV-CE, ETL			